



## Mary Qian's Atlanta Three-Day Portrait Workshop • September 22-24, 2022

Members: \$650 Non-members: \$725

*Portraits by Mary Qian: left, James; and right, Michael.*



**ABOUT Mary Qian:** Qian's love of painting shines through in her figurative canvases, which present seemingly unposed subjects that somehow feel vibrantly alive.

To read more about Mary Qian, visit <http://www.maryqian.com/>

*"My best paintings happen when the model is taking a break or even taking a nap," the artist explains. "For me, it's about capturing the human spirit, not just addressing the technical side of painting."*



Scan the QR code to go to registration, or  
go to: <https://portraitsocietyofatlanta.org/workshops/>

### Other Workshop Questions:

If you have questions, please email [info@portraitsocietyofatlanta.org](mailto:info@portraitsocietyofatlanta.org) or call Jen Riddell at (631) 258-1322 or Margaret Garrett (404) 290-8086





## Mary Qian's Atlanta Three-Day Portrait Workshop • September 22-24, 2022

**Members: \$650 Non-members: \$725**

The Portrait Society of Atlanta welcomes Mary Qian to Atlanta for a three day workshop on September 22-24, 2022. This class will be all day from 9am to 4pm on Thursday, Friday, and Saturday. Through lecture and demonstrations each day the program will focus on using aspects of **Value, Edge, and Color** to create naturalistic portraits. The class will work from costumed, or clothed life models.

### Proposed Schedule

#### Thursday

9:00-11:30am **Value lecture with a demonstration using value to depict facial structure.**

12:00- 4:00pm—Students will be painting the model with one-on-one instruction.

#### Friday

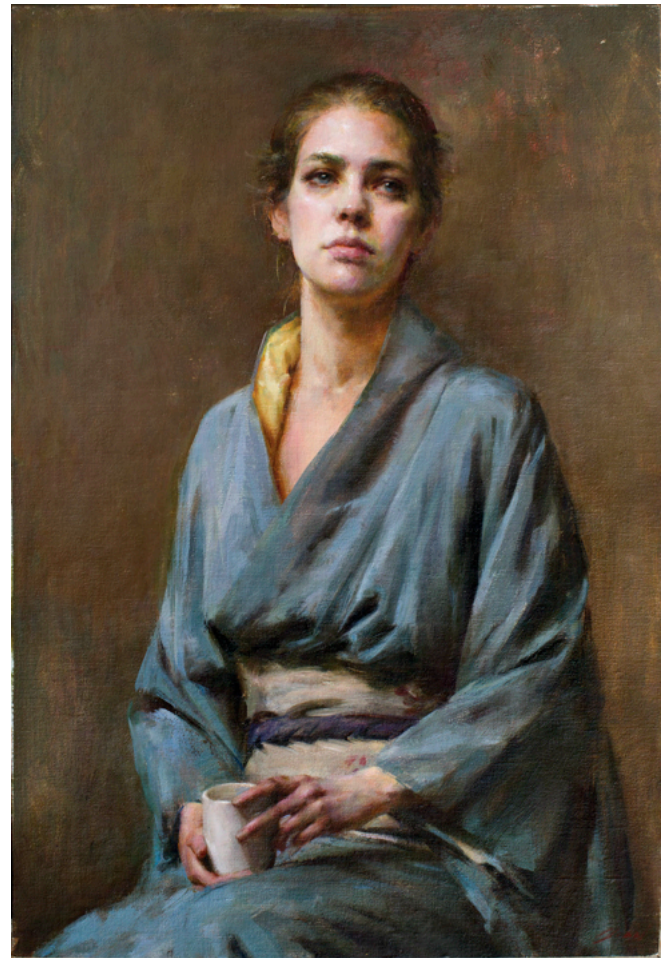
9:00-11:30am — **Edge lecture and demonstration**, in addition to value, now introduce a variety of edge qualities to enhance the sense of space.

12:00- 4:00pm—Students will be painting with one-on-one instruction

#### Saturday

9:00-11:30—Color lecture and demonstration. After having established the foundation of correct **value and edge** relationships on the previous days, **the last day focuses on the Power of Color.**

12:00-4:00pm—Students will be painting with one-on-one instruction



**Scan the QR code to go to registration, or go to: <https://portraitsocietyofatlanta.org/workshops/>**

#### **Other Workshop Questions:**

If you have questions, please email [info@portraitsocietyofatlanta.org](mailto:info@portraitsocietyofatlanta.org) or call Jen Riddell at (631) 258-1322 or Margaret Garrett (404) 290-8086

# Supply List

**Mary's comments on supplies:** *«I can almost work with any kind of materials. I would encourage large size brushes and enough pigments. They don't need to be fancy brands, but should be enough to allow the experience of a juicy painting process. I almost only use linen canvas myself. would encourage everyone to use a decent surface. At least three pieces, no smaller than 8x10, no larger than 24x18. »*

## Painting Surfaces:

Sizes: your preference, from 8x10 up to 24x18

Bring at least three of the type you prefer: stretched canvas; canvas or linen boards; or hard surfaces such as gessoboard.

## Brushes:

Bring a variety of large sized brushes.

*« In a three day workshop I try to help people with their thinking process—instead of asking them to make too many adjustments on the materials they are already comfortable with. However, having 1-2 sizes of 12 or larger brushes will be encouraged, since I feel it makes a big difference in the entire process. Most brushes I use are Rosemary bristle, red sable and master choices, including the fan brushes. They are all natural hair. Sizes 12, 10, 8—and sizes 1 and 2.....but I can almost skip the mid size brushes, regardless of the size of the canvas. Synthetic brushes are not my preference, except for the ivory brushes. »*

## Colors:

### Limited palette:

Burnt Sienna

Yellow Ochre or Naples yellow

Venetian Red (or any type of earth red)

Ivory Black

Alizarin Crimson Permanent

Titanium White

### For a Full Palette, add:

Transparent yellow (or transparent red, orange, or brown) or Burnt Sienna

Raw Umber

Alizarin Crimson Permanent

Cerulean Blue or Ultramarine Blue

### Purples *(I have all, but you only need one or two)*

Listed warm to cool in order:

Quinacridone Magenta • Magenta • Caput Mortuum • Cobalt Violet • Ultramarine Violet

### Cadmiums

Cadmium Yellow • Cadmium Orange • Cadmium Red Light (can be replaced by Naphthol Scarlet) •

Cadmium Lemon

### Sap Green

### Titanium White

### Convenient Colors / High Key Colors *(optional)*

any Radiants colors

Amethyst Parma -- light purple • Cyclamen light - light pink • Linen Grey • Kings blue • Flesh

---

**Bring either a plein air easel or a light weight portable easel and, if needed, a small tray table for supplies. There will be large tables for materials, but not next to the easels. If you're travelling and need assistance, please email [info@portraitsocietyofatlanta.org](mailto:info@portraitsocietyofatlanta.org)**



## Workshop Location

**The Shallowford Annex**  
4470 N. Shallowford Road  
Atlanta, GA 30338

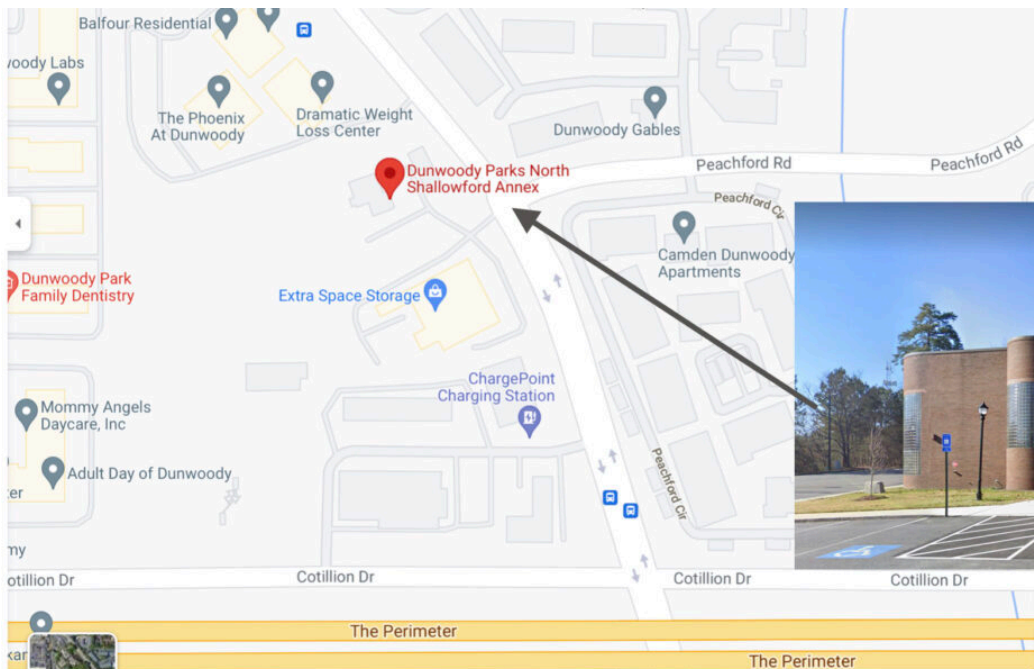
### Driving Directions to 4470 North Shallowford Road

Located just north of the Perimeter on N. Shallowford Rd

**Directions when driving Southbound** on N. Shallowford Rd: look for a sign (North Shallowford Annex) on the right BEFORE the entrance. **Turn right at the light** (at Peachford Road intersection) into the parking lot. **Shallowford Annex** building is on the right, Cube Smart storage on the left.

**Directions when driving Northbound** on N. Shallowford Rd: look for the Cube Smart Self Storage (4444) sign on the left, and **turn left at the light** into the parking lot. **Shallowford Annex** building is on the right, Cube Smart storage on the left.

**If you need advice on nearby hotel accommodations, please email [info@portraitsocietyofatlanta.org](mailto:info@portraitsocietyofatlanta.org)**



**Other Workshop Questions:** If you have questions, please email [info@portraitsocietyofatlanta.org](mailto:info@portraitsocietyofatlanta.org) or call Jen Riddell at (631) 258-1322 or Margaret Garrett (404) 290-8086.